

# Rachel's Network 2009 Annual Report



Rachel's Network (RN) is pleased to reflect on a productive 2009 and share all that we have accomplished during a period of significant transition. Throughout the year, our Network welcomed new members; offered unique leadership services; hosted networking events; updated our communications; grew our outreach programs; and educated members on strategic philanthropy and cutting-edge environmental and women's empowerment issues. Most importantly, we helped extraordinary women connect with peers who share their interests and passions.

With our tenth anniversary on the horizon in 2010, we also began a strategic planning process and entered our first leadership transition as Founder Winsome McIntosh prepared to retire as president and become board chair. The board was pleased to select long-time member Lisa Renstrom as the new president, and they join us in expressing heartfelt gratitude for your support in sustaining this Network over the last year.

What follows is a brief summary highlighting some of the year's achievements. Though Rachel's Network, like all nonprofits, met with challenging economic times in 2009, we feel very fortunate to have closed the year in robust fiscal health. As we enter our second decade, we are confident that the next ten years hold the promise of continued renewal and growth for us all!

Sincerely,

*Winsome*

Winsome McIntosh  
Board Chair

*Lisa*

Lisa Renstrom  
President



## our membership: varied & vibrant



In 2009, RN convened an extensive web of nearly 100 women funders. As in years past, our retention rate remained high, confirming that RN delivered unique benefits to our members. Though diverse in age, geographic origin, interests, and politics, members remained connected by bonds of friendship and a shared commitment to philanthropy and conservation. At least 19 family relationships also connected us, including nine mother-daughter or mother-daughter-in-law pairs, one pair of sisters, four pairs of sisters-in-law, one grandmother-granddaughter pair, three aunts and two nieces, one set of cousins, and countless friends.



CLOCKWISE FROM TOP RIGHT: IRENE CROWE, MARY BILLS & JAN MONTGOMERY EXPLORE GRAND TETON NATIONAL PARK. CAROLYN FINE FRIEDMAN & MARY TYLER JOHNSON DISCUSS ENVIRONMENTAL HEALTH IN NEW YORK. CONNIE GRAY & MARTY TALBOT AT THE ANNUAL MEETING. FORMER CLASSMATES JULIET LAMONT & BRIGITTE KINGSBURY RECONNECT AT THE FALL RETREAT. SUSAN BURGAMY, MARIANNE GABEL & JENNY KEMPS AT THE ANNUAL MEETING.

### RN by the Numbers: MEMBERSHIP & RECRUITMENT

- 99 total 2009 members
- 86 percent retention rate
- 28 to 98 age range
- 24 home states
- Over 65 prospects referred by 19 members
- 10 new members joined
- 1 returning Environmental Leadership Liaison, Maggie L. Fox of the Alliance for Climate Protection

TOP LEFT, MOLLY ROSS, IRENE CROWE & SUSAN FULTON DISCUSS A SHARED INTEREST IN ANIMAL WELFARE. BELOW, MEMBERS GATHER FOR A SPEAKER SERIES EVENT WITH LARRY SCHWEIGER IN SAN FRANCISCO. FURTHER BELOW, JANE BASS DISCUSSES ADVOCACY WITH LIAISON FRANCES BEI-NECKE AT A NEW YORK SPEAKER SERIES EVENT.



### RN by the Numbers: COMMUNICATIONS

Over 5,000 website visits  
Weekly news & events listservs  
Membership Directory  
Green Leaves newsletters  
Monthly e-newsletter

Recruitment of new members helped our Network gain strength by introducing fresh perspectives and untapped connections, and we cultivated relationships with over 65 prospective members in 2009. Because reliable renewals are equally essential to building a stable community, we kept members connected with six networking events – some hosted by board members – in the hub cities of Washington, D.C. in January and June, Palm Beach in February, New York in May, and the Bay Area in June and December. All the while, our communications ensured that members developed meaningful ties between events.

### our programs: learning & leading

RN services continued to help members achieve their personal leadership development goals. Our board placement program, which elevates members to the governing bodies of major nonprofits, placed three members, helping to redress the gender imbalance at the uppermost tiers of the environmental movement and bringing total placements through 2009 to 33. Two members availed themselves of our Fiscal Sponsorship Fund, which allows them to incubate new



projects through our established nonprofit structure: Montine Hansl with the China/U.S. Environmental Education Project, under its second year of sponsorship, and Martha Davis with the Community Conch initiative, a conservation biology project that studies Bahamian conch populations.

### RN by the Numbers: LEADERSHIP DEVELOPMENT & EDUCATION

3 members placed on boards  
9 nonprofits requested placement  
2 Fiscal Sponsorship Fund projects  
3 Speaker Series events  
10 Teleconferences

To deepen members' understanding of environmental issues, we tapped preeminent experts for Speaker Series events with Larry Schweiger, president of the National Wildlife Federation, in San Francisco; RN Environmental Leadership Liaison Nan Aron, founder and president of Alliance for Justice, in Washington, D.C.; and Ricky Perera, director of the Columbia Center for Children's Environmental Health, in New York. To

encourage our far-flung membership to participate in educational exchanges with leading thinkers, we held teleconferences on timely topics with Angela Anderson of Pew Environment Group's Global Warming Campaign, Darren Samuelsohn of *Greenwire* and *Energy and Environment Daily*, Michaela Oldfield of Water Advocates, Dori Krieger and Sid Nilsen of Foundation Center, Jane Houlihan of Environmental Working Group, Antonia Herzog of the Natural Resources Defense Council's Climate Center, Winsome McIntosh of RN, Heather Coleman of Oxfam America, Cathy Hurwit of Rep. Jan Schakowsky's (IL-09) office, and Jonathan Hiskes and David Roberts of *Grist.com*. This esteemed group shared their cutting-edge work, helping us build connections between ideas and leaders.



### our meetings: convening community

In March, members gathered in Washington, D.C. for our Annual Meeting, which focused on Protecting Biodiversity and the Future of Environmental and Philanthropic Policy. Speakers ran the gamut from a diverse panel of scientists at the Smith-



*RN by the Numbers:*  
COMMUNITY-WIDE  
GATHERINGS

ANNUAL MEETING:  
38 members, 1 guest  
17 speakers  
FALL RETREAT:  
25 members, 6 guests  
9 speakers

sonian Conservation Biology Institute, where we spent a day immersed in innovative species restoration projects, to leaders on philanthropic policy in the Obama administration's Office of Public Liaison to Environmental Protection Agency Administrator Lisa Jackson.

In October, we gathered in Jackson Hole, Wyoming to probe the topic of Preserving America's Wild Spaces. With a special excursion to Grand Teton National Park, we absorbed perspectives from local leaders in the ranching, conservation, and philanthropic communities.



*outreach programs: extending our influence*



In 2009, RN's outreach programs each reached maturity, harnessing our collective influence to effect significant change.

**CONGRESSIONAL WOMEN'S NETWORKING INITIATIVE**

RN continued to offer women in the House of Representatives opportunities to connect across partisan lines. In January, we co-hosted the first reception welcoming newly sworn-in Congresswomen with the League of Women Voters, attended by over 75 nonprofit leaders and legislators. In July, we partnered with Rutgers University's Center for American Women and Politics to co-host the second Congressional Women's Roundtable, focused on women's financial literacy. In September, we hosted a private dinner for freshman women Members of Congress, allowing them to reflect on their first year in office.

**STRATEGIC CONNECTORS PROGRAM**

Our partnership with the National Association of Evangelicals (NAE) helped "creation care" build more credibility in this religious community. With our support, NAE hosted a March event for evangelical women, co-hosted May's "Flourish" conference, co-hosted June's "Caring for God's Creation" conference, and gathered over 200 prominent pastors for October's "Evangelical Leaders' Forum." We established ties with Dr. Galen Carey, NAE's new director for government affairs, and also worked with former NAE Vice President for Governmental Affairs Rev. Richard Cizik as he incubated plans for a new association of evangelicals committed to stewardship of the earth.

**ENVIRONMENTAL WORKING GROUP (EWG) BODY BURDEN COLLABORATION**

Our efforts to document the pervasive dangers of unregulated toxic chemicals through biomonitoring tests culminated in an outstanding year. We received results from an RN-funded cohort of subjects, including five women leaders and ten samples of infant umbilical cord blood, all drawn from socioeconomically disadvantaged communities across the U.S. The labs found 51 of 75 tested chemicals in the women and 247 of 383 in the cord blood. We then empowered the women to visit 13 legislators' offices, participated in a conference on chemical safety attended by top scientists and policymakers, and collaborated on a PR campaign, earning mentions in television, print, and new media outlets.

2009  
*Major Donors*

We appreciate the generosity of the following supporters, who contributed grants of at least \$2,000 above membership.

Kathy Borgen & Brooke Borgen  
*Borgen Family Foundation*

Irene Crowe  
*Pettus-Crowe Foundation*

Sally Davidson

Caroline Gabel  
*Shared Earth Foundation*

Marianne Gabel

Memphis Holland

Ann Hunter-Welborn

Renée Ingold

Fa Liddell

Winsome McIntosh  
*The McIntosh Foundation*

Oxfam America

Adelaide Park Gomer  
*Park Foundation, Inc.*

Lisa Renstrom

Ann R. Roberts

Wendy Gordon Rockefeller

Molly Ross

Anne Rowley & Jocelyn Sladen  
*Marjorie Sale Arundel Fund  
for the Earth*

Barbra Streisand  
*The Streisand Foundation*

Lynde B. Uihlein  
*The Brico Fund, LLC*

Carolyn Weinberger

THIS PAGE FROM TOP LEFT: THE GROUP GATHERS IN FRONT OF THE GRAND TETONS. JESSICA WELBORN & ANNE ROWLEY EXPLORE GRAND TETON NATIONAL PARK AT THE FALL RETREAT. SARAH DUPONT CHATS WITH REP. LOIS CAPPS (CA-23) AT THE RECEPTION WELCOMING WOMEN TO THE 111TH CONGRESS. PREVIOUS PAGE, BOTTOM ROW, MARA HENDRIX MEETS SCBI BIOLOGIST DR. MARY HAGEDORN. SUZANNE ENGEL MEETS REP. DONNA EDWARDS (MD-4). THE GROUP GATHERS BEFORE THE WHITE HOUSE.

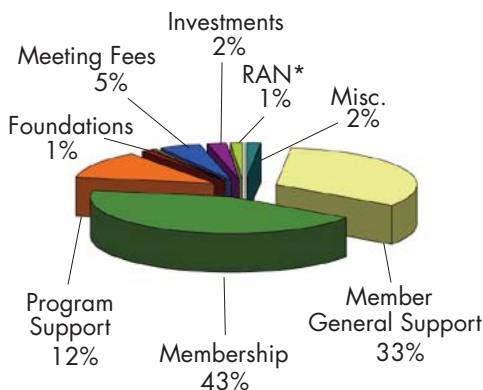


## our finances: sustaining our success

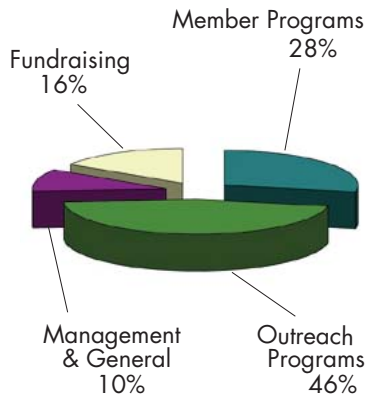
RN entered 2009 with a firm financial foundation built over nine years of conservative spending, cautious investment, and assertive pursuit of funding. Our members stepped forward to support RN programs as well as general operations. Smaller revenue streams, including meeting fees and investments, supplemented major gifts and membership dues, which remained the bedrock of our security, even as the economy began a tentative rebound. Two members and two additional nonprofits generously supported our CWNI and Strategic Connectors outreach programs, with grants totaling \$107,020, while our Environmental Working Group (EWG) Body Burden Collaboration program did not raise additional funds. Eighteen percent of our membership contributed over \$250,000 in unrestricted support, comprising 30 percent of annual revenues, with gifts ranging from \$250 to \$90,000. Within this total, over \$200,000 was provided by our board of directors, whose role in shoring up our institutional advancement was invaluable.

RN has always managed our finances with an eye toward maintaining stability, setting aside assets in a strategic reserve to offset anticipated grant reductions and ensure that members continued to benefit from top-flight programs during lean times. In 2009, we worked diligently to reduce expenditures to below projected levels and are proud to report that in a year of drastic cutbacks in the nonprofit sector, we ended the year in the black. We thank all of our stakeholders for your continued investment in our success, allowing us to forge ahead with a renewed confidence in our community and with every expectation that we will continue to flourish in our second decade and beyond.

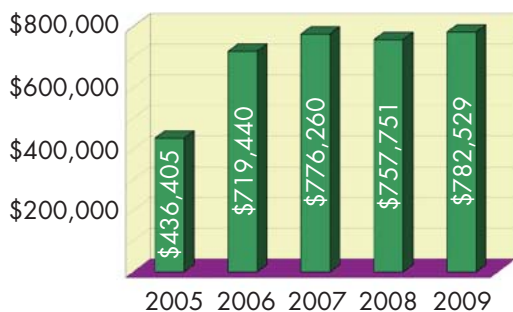
### 2009 REVENUES



### 2009 EXPENDITURES



### GROWTH IN ASSETS



THIS REPORT REFLECTS GRANTS TO RN FROM JANUARY 1 TO DECEMBER 31, 2009. EVERY EFFORT HAS BEEN MADE TO ENSURE ACCURACY; SHOULD AN ERROR HAVE OCCURRED, PLEASE CONTACT MIRIAM FEFFER WITH ANY CORRECTIONS.

## 2009 FINANCIAL STATEMENT

### REVENUES

FOUNDATIONS	\$ 12,020.24
GENERAL SUPPORT	\$ 253,747.95
RENEWALS	\$ 285,079.05
NEW MEMBERS	\$ 45,000.00
PROGRAM SUPPORT	\$ 95,000.00
RAN REIMBURSEMENT	\$ 8,252.12
RAN REVENUE*	\$ 7,750.00
FISCAL SPONSORSHIP	\$ 4,900.00
EWG BODY BURDEN	-
CHINA/U.S. PROJECT	-
COMMUNITY CONCH	\$ 65,100.00
MEETING FEES	\$ 34,750.00
INVESTMENT INCOME	\$ 18,076.18
REALIZED GAINS & LOSSES	\$ (374.44)
UNREALIZED GAINS & LOSSES	\$ 8,978.47
MISCELLANEOUS	\$ 1,500.00
<b>TOTAL REVENUES</b>	<b>\$ 839,779.57</b>

### EXPENDITURES

LEADERSHIP	\$ 27,481.21
WEBSITE/LISTSERV	\$ 7,523.31
DIRECTORY	\$ 20,349.38
NEWSLETTER	\$ 8,706.46
LEADERSHIP EVENTS	\$ 28,101.22
TELECONFERENCE CALLS	\$ 7,459.18
ANNUAL MEETING	\$ 62,811.52
FALL RETREAT	\$ 63,907.44
EDUCATION	-
<b>MEMBER PROGRAMS SUBTOTAL</b>	<b>\$ 226,339.72</b>
GOVERNMENT AFFAIRS	\$ 6,688.59
CWNI	\$ 99,277.38
FISCAL SPONSORSHIP FUNDS	\$ 31,646.76
EWG BODY BURDEN	\$ 15,206.09
CHINA/U.S. PROJECT	-
COMMUNITY CONCH	\$ 58,567.04
MEDIA RELATIONS	\$ 80,272.36
STRATEGIC CONNECTORS	\$ 77,661.56
RAN EXPENSES	\$ 11,057.04
<b>OUTREACH PROGRAM SUBTOTAL</b>	<b>\$ 380,376.82</b>
<b>TOTAL PROGRAM EXPENSES</b>	<b>\$ 595,659.50</b>
MANAGEMENT	\$ 83,633.77
FUNDRAISING	\$ 127,958.41
<b>TOTAL EXPENDITURES</b>	<b>\$ 818,308.72</b>

### ASSETS

CHANGE IN NET ASSETS - RN	\$ 24,777.89
NET ASSETS FROM 2008 - RN	\$ 757,751.19
<b>2009 NET ASSETS</b>	<b>\$ 782,529.08</b>

\*RN AND RACHEL'S ACTION NETWORK (RAN), OUR 501(C)(4) SISTER ORGANIZATION, HAVE SEVERAL OVERLAPPING BOARD MEMBERS BUT MAINTAIN SEPARATE MEMBERSHIPS. RN DOES NOT EXERCISE CONTROL OVER RAN'S PROGRAMS OR ASSETS.