

A photograph of three women climbing a wooden ladder that is attached to a large, reddish-brown rock face. The women are wearing athletic gear. The background is a clear blue sky. The text 'WOMEN on the RISE' is overlaid on the right side of the image.

WOMEN *on the* RISE

Rachel's  Network

2010
Annual Report

Board of Directors

Kathy Borgen, *Chair*
Irene Crowe, *Vice Chair*
Sarah duPont
Caroline Gabel, *Chair Emerita*
Marianne Gabel
Charlotte Hanes
Ann Hunter-Welborn, *Treasurer*
Renée Ingold
Fa Liddell
Winsome McIntosh, *Founder & President Emerita*
Adelaide Park Gomer
Molly Ross, *Secretary*
Jocelyn Sladen

Staff

Kate Drummond
Program Manager
Miriam Feffer
Director of Institutional Advancement
Thu Pham
Executive Director
A.Tianna Scozzaro
Program Manager

Environmental Leadership Liaisons

Margie Alt
Environment America
Nan Aron
Alliance for Justice
Frances G. Beinecke
Natural Resources Defense Council
Leslie Carothers
Environmental Law Institute
Jamie Rappaport Clark
Defenders of Wildlife
Suzanne Ehlers
Population Action International
Phaedra Ellis-Lamkins
Green for All
Maggie Fox
Alliance for Climate Protection
Kathryn Kennedy
Center for Plant Conservation
Stephanie Meeks
National Trust for Historic Preservation
Vikki Spruill
Ocean Conservancy
Rebecca Wodder
American Rivers

Circle of Advisors

Rev. Canon Sally Bingham
Dr. Helen Caldicott
Dr. Theo Colborn
Dr. Sylvia Earle
Kathryn S. Fuller
Dr. Jane Goodall, DBE
Hazel Henderson
L. Hunter Lovins
Dr. Carolyn Merchant
Nora Pouillon
Carolyn Raffensperger
Debbie Walsh
Alice Waters
Terry Tempest Williams

About Us

Rachel's Network is a national nonprofit membership organization named in Rachel Carson's honor. Our mission is to promote women as impassioned leaders and agents of change dedicated to the stewardship of the earth.



Message from the Board Chair4

Message from the Executive Director.....5

Designing the Blueprint for our Future.....6

Building Community & Deepening Shared Ties.....7

Gathering our Community.....9

Facilitating Leading-Edge Learning.....11

Cultivating Exemplary Advocacy12

Harnessing our Influence & Raising our Profile.....13

Sustaining our Success.....14

COVER: MEMBERS ASCEND TO THE SUMMIT OF NEW MEXICO’S HISTORIC PUYE CLIFFS DURING THE FALL RETREAT.

BACK COVER: MEMBERS GATHER OUTSIDE THE CAPITOL DURING THE ANNUAL MEETING.

THIS PAGE, TOP TO BOTTOM: LISA RENSTROM & MARCIA ANGLE PREPARE TO MEET WITH MEMBERS OF CONGRESS AT THE ANNUAL MEETING. LINDA CAMPBELL & LAURIE KRACUM APPLAUD IMPACT INVESTING SPEAKERS AT THE FALL RETREAT. WINSOME MCINTOSH, JESSICA FULLMER & CONNIE GRAY CATCH UP AT THE TENTH ANNIVERSARY CELEBRATION.



On behalf of Rachel's Network's board of directors, I am pleased to share this update on our accomplishments throughout our milestone tenth anniversary year.

Thanks to valued stakeholders like you — our members, funders, advisors, speakers, program partners, and many others — Rachel's Network enjoyed a remarkable year of achievement and demonstrated our resilience in the face of an incremental economic recovery.

In 2010, Rachel's Network celebrated the astonishing growth and distinguished slate of program offerings that characterized our first decade. We looked back in appreciation on our remarkable expansion from the Founders' Circle, a cadre of 18 dedicated women funders who established our "good old girls' network" in 2000, to nearly 100 advocates who span the nation and collectively represent over \$500 million in annual grantmaking.

Under the leadership of Past President Lisa Renstrom and a committee representing our accomplished membership, we also completed the Blueprint 2010 strategic planning process that set a course for our next five years. The resulting plan succinctly expressed our renewed focus on community-building initiatives and outlined new efforts to raise our organizational profile.

As the incoming board chair, I am honored to succeed Caroline Gabel, now chair emerita, and to acknowledge the invaluable leadership she provided the Network over her seven years of service. Needless to say, we must also pay tribute to the un-

paralleled vision and tenacity of Founder and President Emerita Winsome McIntosh in enabling us to reach this point. As always, the board has provided steadfast support and sage counsel in its oversight of our growth, and it is a privilege to work with each of the leaders alongside whom I serve.

When Thu Pham assumed the position of executive director in October, the Network continued to benefit from the deep reserve of institutional memory, commitment to institutional excellence, investment in members' individual success, and quiet leadership she has provided us in multiple capacities over her first ten years on staff. We are confident that her talent for building relationships and vision for our future will ensure that the Network continues to be a peerless convener of women funders seeking to leverage their influence for the environment.

Finally, I must note how grateful I am to share this community with our extraordinary members. These women lead at the uppermost echelons of the organizations they support, giving generously of their time, financial assistance, and insight gleaned from hands-on experience. They are impressive as individuals, but to see our group in the aggregate is to marvel at a kaleidoscopic spectrum of interests, backgrounds, generations, politics, and funding.

As you will read in the report that follows, 2010 was a year of giving thanks and looking forward. I am grateful to have worked closely with so many of you who have made Rachel's Network a priority through your ongoing support, and I invite you to continue to play a role in our community in the years to come.

In appreciation,

A handwritten signature in cursive script that reads "Kathy".

Kathy Borgen

When I reflect upon the last year — and decade — with Rachel's Network, I am awed by what a great distance our organization has travelled in such a short time. Our Network's extensive influence in the philanthropic, advocacy, and women's empowerment communities transcends the ambitious expectations laid out by our Founders' Circle ten years ago, when I began work as the very first staff member. Each year, we welcome new members, reach out to new strategic partners, and develop programs that better serve the inspiring women whose work lies at the core of what we do.

After ten years of helping to build this thriving community, I am deeply grateful to our board for entrusting me with the opportunity to lead us into our second decade. Their sound guidance has been invaluable in setting the Network on a clear course of growth, and I am thankful to Chair Emerita Caroline Gabel, Chair Kathy Borgen, and our wise and committed directors for their extraordinary leadership through a period of transition. As I have said many times before but am pleased to reiterate, Founder and President Emerita Winsome McIntosh has been an invaluable mentor, role model, and friend to me — as she has to so many of you — and our community's strength is due in large part to her strategic brilliance and tireless work on our behalf.

Lisa Renstrom's tenure as president in 2010 resulted in an innovative focus on the Network's means of cultivating member connectedness. Her introduction of the Online Community and Learning Circles initiative advanced the Network toward new frontiers and deepened members' sense of belonging. These thriving programs complemented a robust slate of educational offerings, leadership development services, and community-building initiatives that have made the Network such a meaningful experience for our members. I thank her for her energy and passion for the Network.

Our members continue to motivate all of us to emulate their dedication to outstanding work as funders and advocates. These women have accomplished tremendous feats as professional and lay leaders, and they have matched their philanthropic generosity with a generosity of spirit in serving as mentors, allies, and partners to one another.



On the subject of extraordinary women, I would also like to acknowledge the unwavering commitment and enthusiastic engagement of our talented staff. This small-but-mighty team manages an incredible array of networking and educational events, leadership development services, and publications that exceed our members' exacting standards. They serve our community with a perpetual eye toward enhancing the member experience. They are also a supportive network of colleagues who set the warm and welcoming tone members value at our events.

I look forward to sharing the coming year with all of our supporters and thank you for enriching the Rachel's Network community with your participation and support.

Sincerely,

A handwritten signature in dark ink, appearing to read "Thu Pham".

Thu Pham
Executive Director

In October 2009, with Rachel's Network's tenth anniversary on the horizon, the board of directors approved a strategic planning process to create a five-year plan for the organization's continued success. Following President Lisa Renstrom's recommendation, the board chartered the Design Committee, a working group of Network members selected to reflect our membership's breadth in terms of geography, generation, philanthropic channels, advocacy focus, board service, and duration of membership.

Blueprint 2010, the strategic plan that emerged, was conceived to fulfill the promise represented by our first ten years as we entered our second decade. The Blueprint established a desired outcome of making Rachel's Network "the go-to place for women to connect and practice transformative environmental philanthropy and advocacy."

This goal was supported by four major strategies: Building Community, Cultivating Individual Excellence, Advancing Solutions, and Raising our Public Profile. Under each such strategic umbrella, the committee set measurable targets for the first three years, with quantitative benchmarks specified where possible.

The committee spent six months assessing the Network's position and determining best steps forward, meeting monthly. Upon completion of these productive conversations, the board, Design Committee, and staff

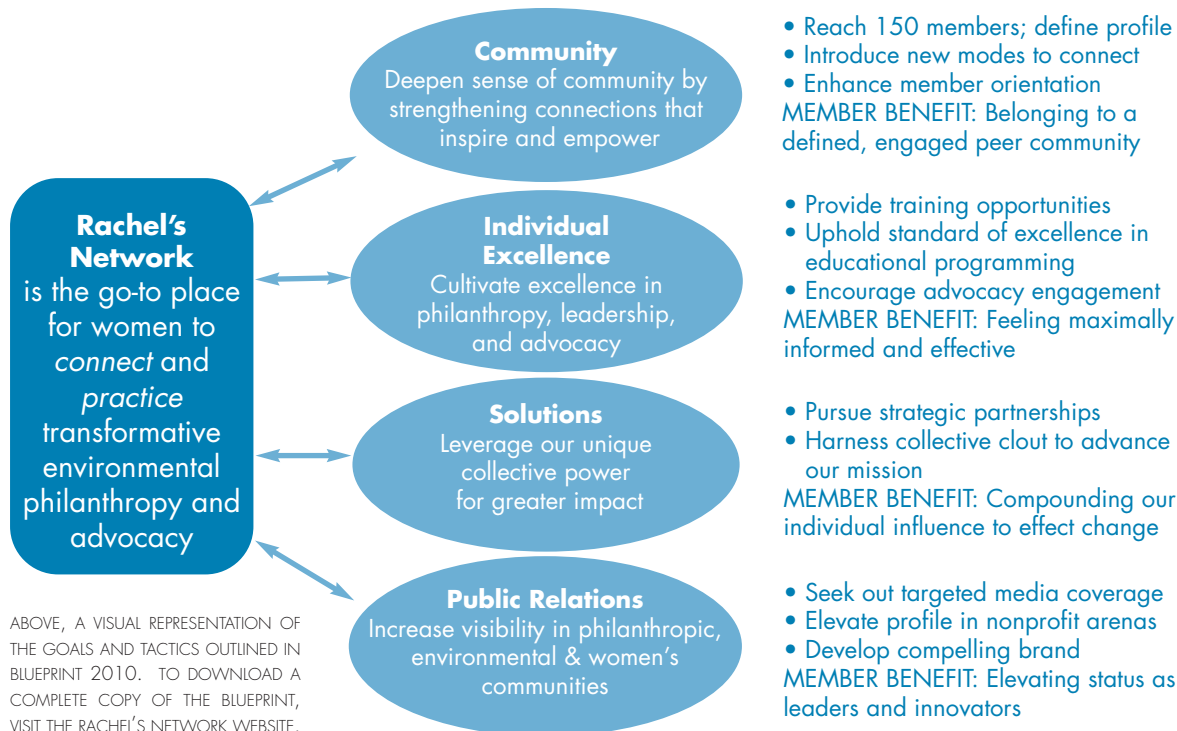
agreed that a deeper sense of community was critical to achieving the stated outcome. They resolved that the Network must add irreplaceable value to advancing members' philanthropic goals; provide them with resources to hone their leadership; and empower them to be effective advocates. As a result, and through public outreach, the organization would build greater capacity to showcase members' individual work and collective achievement to the outside world.

The board approved Blueprint 2010 in June, and staff immediately initiated programmatic innovations. Among plan's specifications were quantifiable measures of progress toward the strategic goals. As such, an annual survey was instituted to gather information about members' activities and experiences as funders, advocates, and participants in the Network during the previous year. Half of the membership completed the 2010 survey, creating a baseline against which progress will be measured in subsequent years.

The Blueprint was shared with our extended community throughout the second half of the year. With the ongoing encouragement of our members and stakeholders, we look forward to implementing this plan as we continue to flourish and grow.



Blueprint 2010: A Vision for Our Second Decade



ABOVE, A VISUAL REPRESENTATION OF THE GOALS AND TACTICS OUTLINED IN BLUEPRINT 2010. TO DOWNLOAD A COMPLETE COPY OF THE BLUEPRINT, VISIT THE RACHEL'S NETWORK WEBSITE.

LEFT: COMMITTEE MEMBERS MARY TYLER JOHNSON & LYNDE B. UHLEIN DISCUSS INTERGENERATIONAL FUNDING STRATEGIES. RIGHT: THE COMMITTEE ASSEMBLES FOR A PHOTO AT THE ANNUAL MEETING.

Thank You!

The following members gave generously of their time and wisdom in planning for our future success.

Design Committee

- Linda Campbell
- Pam Conant
- Martha Davis
- Sarah duPont
- Marianne Gabel
- Connie Gray
- Mara Hendrix
- Ann Hunter-Welborn
- Mary Tyler Johnson
- Jan Montgomery
- Lisa Renstrom
- Lynde B. Uihlein

Cultivating our Community

In 2010, the Rachel's Network community strengthened its position as a well-spring of support, with members giving generously of their time and resources to keep the Network strong. With nearly 100 total members throughout the year, our community encompassed an extensive array of women funders with influential outreach to educational outlets, advocacy groups, and foundations.



We also invited three new Environmental Leadership Liaisons, all women chief executives of major national environmental non-profits: Suzanne Ehlers of Population Action International, Phaedra Ellis-Lamkins of Green for All, and Stephanie Meeks of the National Trust for Historic Preservation.

Given the limited intersection of women funders who fit our profile, and the slow pace of economic recovery, 2010 represented a year of steady progress toward our long-term membership goal of 150.



As in years past, our retention rate remained high, confirming that Rachel's Network offers members unique value. Though diverse in age, region, and politics, members remained connected by bonds of fellowship and a shared commitment to philanthropy, women's leadership, and conservation.

At least 14 family relationships also graced our roster, including seven mother-daughter or -daughter-in-law pairs, four pairs of sisters or sisters-in-law, one set of cousins, and a grandmother and two granddaughters.

Because member retention is equally crucial to building a stable community, the Network kept members in touch with regular networking events in hub cities, providing board-hosted opportunities to reach out to prospective members in those areas. We also introduced new virtual technologies — including a revamped eConnections newsletter and a custom-designed Online Community — to help members harness the camaraderie and productive exchanges that distinguish our in-person events.

Broadening our Membership Base

Recruitment is essential to the Network's continued strength. Each new member expands our circle to her friends, relatives, organizations she supports, grantmaking institutions, and fellow board members. Carson Council membership is also our core revenue stream, accounting for nearly half of our budget.

The Network earned solid membership growth in 2010, welcoming 11 new women to our community.

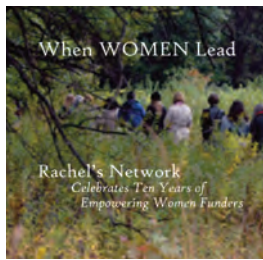
Network by the Numbers:
MEMBERSHIP

- 96 total 2010 members
- 85 percent annual retention rate
- 32 to 99 age range
- 24 home states
- 11 new members
- 3 new Liaisons

TOP, IRENE CROWE & ADELAIDE PARK GOMER FIND HUMOR IN THE SHARED CHALLENGES OF FOUNDATION MANAGEMENT. BOARD MEMBER FA LIDDELL & ALICE LIDDELL, A MOTHER-DAUGHTER MEMBER PAIR, CELEBRATE OUR TENTH ANNIVERSARY.

Connecting through Communications

With a renewed focus on connecting our community, communications assumed primacy as a relationship-building tool. Throughout the year, Network publications kept members in contact with one another and the Network. Our weekly news and events listservs disseminated stories culled from a variety of media outlets and notified members about events of interest across the country. The biannual *Green Leaves* newsletter remained a vital source of information about issues of interest, Network programs, and member projects. Our annual *Membership Directory* compiled members' affiliations and interests to facilitate networking year-round.



In honor of our Tenth Anniversary, we created a retrospective booklet charting our successes over our first ten years, along with a companion video featuring reminiscences of our members, advisors, and program partners.

We were pleased to add several exciting new media initiatives to our roster of print and electronic publications. Our monthly e-bulletin, *eConnections*, continued to provide the most up-to-date information on pro-



**Network by the Numbers:
STAYING CONNECTED**

18 video project participants
7 Learning Circles, with 32 participants
over 900 Online Community visits

grams and members' activities, and we added a "Member to Member" feature that permitted members to pose a question to the entire membership, with responses shared in the following month's edition. We also expanded our social media presence, with Facebook, LinkedIn, and Twitter accounts to orient members new to these platforms and increase our presence within their virtual networks.

Most notably, we invested an enormous amount of forethought into launching our Online Community, a custom-designed, members-only website that offers a searchable member directory, lively discussion forums, interactive events calendar, virtual libraries stocked with shared resources, and photos and summaries of Network programs. The site debuted in October, with members reporting great appreciation for this accessible way to plug into the Network. Because many members also confessed to feeling overwhelmed by the dizzying array of social networking technology, staff provided regular tutorials to orient them to the site and build a skill set relevant to any organization they support.

Introducing Learning Circles

The Network has always been proud of the breadth of members' advocacy interests. When Blueprint 2010 paved the way for increased member-driven program development, we established Learning Circles. These peer-led groups focus on a specific topic,

and participants agree to the terms of their shared exploration and desired outcome, be it a reading group, teleconferences with guest speakers, or joint funding endeavor.

In March, the Annual Meeting included a session to pilot the concept, during which members gathered in small groups to determine how to deepen their knowledge on designated issue areas. Following that meeting, Learning Circles were convened around the topics of Agriculture and the Environment, Environmental Education, Human-Animal Relations, Impact Investing, Sustainable Global Population, and Water. When the Online Community was introduced in the fall, each Circle was allotted a home site, resource library, and discussion group, and robust participation ensued. The Agriculture and Environment, Environmental Education, and Impact Investing Circles each instituted regular teleconferences and committed to continuing to meet through 2011. We are eager to provide this outlet to members seeking to convene around other issue areas or funding strategies and seize opportunities for leadership within the Network.



CLOCKWISE FROM ABOVE: BARBARA GILMORE, MOLLY ROSS, CHARLOTTE HANES & CAROL BIRD RAVENAL LAUNCH THE SUSTAINABLE AGRICULTURE LEARNING CIRCLE. KATHY BORGEN & JAN MONTGOMERY DISCUSS WATER ISSUES WITH LIAISON VIKKI SPRUILL OF OCEAN CONSERVANCY. THE ONLINE COMMUNITY LAUNCHES IN OCTOBER. A SPECIAL PUBLICATION CELEBRATES OUR FIRST DECADE.



Celebrating our First Decade's Successes



Our 2010 Annual Meeting began with a Tenth Anniversary Celebration Dinner as we honored the pioneering vision of Founder and President Emerita Winsome McIntosh, who in turn acknowledged the Founders' Circle for investing in our early success. Each Founder was thanked with a personal account of her pioneering support for our fledgling Network.



Over 120 members, former members, Liaisons, Advisors, program partners, funders, staff, and leaders in the environmental and philanthropic communities joined us to screen a retrospective video, help Chair Emerita Caroline Gabel pay tribute to Winsome, and hear from keynote speaker and Network Liaison Frances Beinecke, president of the Natural Resources Defense Council. As then-President Lisa Renstrom noted, the event provided a fitting launch to an Annual Meeting focused on the difference made "When Women Lead."



Annual Meeting: Washington, D.C.

In March, 41 members convened in Washington, D.C. for our Annual Meeting, which focused on the theme "When Women Lead: Seeding Strategies for a Healthy Tomorrow." The first full day's program began with a State of the Network update, followed by a thought-provoking panel on women's leadership at the top tier of conservation nonprofits with four Environmental Leadership Liasons: Environment America's Margie Alt, Alliance for Climate Protection's Maggie Fox, Environmental Law Institute's Leslie Carothers, and Ocean Conservancy's Vikki Spruill. They were followed by a panel of three innovators — Gillian Caldwell of 1Sky, Erin Gorman of Divine Chocolate US, and Jessy Tolkan of Green for All — addressing the same diversity of perspectives as women in their 20's, 30's, and 40's.

To further develop members' leadership, we invited Liaisons Jamie Rappaport Clark of Defenders of Wildlife and Rebecca Wodder of American Rivers to facilitate a board service workshop. We then gathered in self-selected groups to pilot our Learning Circles initiative. We were moved that evening by the intimate account of ecologist, author, and cancer survivor Dr. Sandra Steingraber, a crusader for environmental health who screened excerpts from a forthcoming film in an exclusive premiere.



Galvanized to act by Sandra's story, we gathered on Capitol Hill the following day for a morning of advocacy. Members then visited the offices of their Representative or Senator to personally lobby for toxic chemicals policy reform. Over lunch, Kristin Rowe-Finkbeiner, founder and president of MomsRising.org, detailed her campaign to engage women in the battle for safer chemicals. After a visit to the National Museum of Women in the Arts, we moved from a conversation about women's impact as advocates to a discussion of our potential as candidates over a farewell dinner with Dr. Jennifer Lawless of American University's Women and Politics Institute. Energized by her encouragement to support women's political leadership, we parted ways with new ideas for our work and renewed connections to one another.



CLOCKWISE FROM TOP LEFT: WINSOME MCINTOSH & LISA RENSTROM CELEBRATE OUR TENTH ANNIVERSARY. LYNDE B. UIHLEIN & ANNA LAWSON CONNECT OVER REGIONAL GRANTMAKING. CAROLYN FINE FRIEDMAN, NINA RANDOLPH, DR. SANDRA STEINGRABER & SARAH DUPONT DISCUSS ENVIRONMENTAL HEALTH. LAURIE KRACUM, JAN MONTGOMERY & PROGRAM MANAGER KATE DRUMMOND PREPARE TO LOBBY ON TOXIC CHEMICALS. WINSOME ACKNOWLEDGES FOUNDERS JOCELYN SLADEN, RENÉE INGOLD, VICTORIA STACK, DANE NICHOLS, CAROLYN WEINBERGER, CAROLINE GABEL & LYNDE B. UIHLEN. LIAISON FRANCES BEINECKE DETAILS WINSOME'S LEADERSHIP IN THE ENVIRONMENTAL MOVEMENT.

Gathering Our Community: Annual Meeting

Fall Retreat: Santa Fe

In October, the 2010 Fall Retreat in Santa Fe, New Mexico returned members to the site of our Network's founding meeting and delved deeply into cutting-edge sustainability initiatives in the Southwest. Over these three days, more than 30 members and guests came together to learn from expert speakers and exchange ideas in a breathtaking natural setting and equally rich cultural environment.

The meeting opened with a special tribute to Rachel Carson from BirdNote's Chris Peterson and Nancy Rumbel, followed by an inspiring account of growing into leadership Nina Simons of Bioneers. Lisa Renstrom began the first morning with a State of the Net-

RN by the Numbers:
2010 GATHERINGS
 66 total members attended
 8 guests, 1 of whom joined
 33 speakers

work update, complete with a sneak preview of our Online Community and new outreach program, followed by a nostalgic Founders' panel recalling the Network's early dreams. We then debuted a "World Café" discussion allowing members to share personal stories of their evolution as funders.

Environmental justice advocates Sebia Hawkins of the NM Environmental Law Center and Bineshi Albert of the SouthWest Organizing project then addressed the region's water and mining issues. The afternoon found us visiting the home of Kathy Sanchez, a women's empowerment advocate in the San Ildefonso Pueblo, to witness a demonstration of the Pueblo's signature pottery led by artisans Wayland Sanchez and Vanessa Virgil. After an incomparable visit to the Puye Cliffs, where centuries-old ruins

model a bygone ethos of sustainable building, Kathy discussed her inspiring efforts over dinner.

On the final day, we opened with a panel on impact investing featuring Confluence Philanthropy founder Dana Lanza, Suzanne Biegel of Investors' Circle, and Springcreek Foundation's Ali Long, all of whom shared personal experiences in enacting mission-driven investment policies. A second panel highlighted the pioneering role of community foundations in innovative local investing, including thoughts on partnering with government from Robin Brulé of the Center for Philanthropic Partnerships and a Native American business perspective from Shyla Sheppard of New Mexico Community Capital. Over lunch, NM Secretary of Indian Affairs Alvin Warren related the challenges he has overcome in securing environmental parity for First Nations communities.

As we considered these local initiatives, we heard from a panel of area businesswomen implementing sustainable economic development solutions ranging from ecotourism to green cleaning products to the renowned Santa Fe Farmers' Market. Gallery owner Natalie Fitz-Gerald hosted a final reception, followed by an in-depth look at the intersection of policy and environmental advocacy over a farewell dinner with NM Secretary of the Environment Ron Curry. With heartfelt thanks to meeting co-chairs Memphis Holland and Renée Ingold, we concluded another transformative community gathering.



TOP ROW: MARA HENDRIX & MOLLY ROSS NETWORK EN ROUTE TO THE PUYE CLIFFS. THE GROUP EXPLORES PUYE CLIFF DWELLINGS WITH A LOCAL GUIDE. SALLY DAVIDSON SNAPS PHOTOS OF SAN ILDEFONSO POTTERY. FA LIDDELL & SPEAKER SEBIA HAWKINS DISCUSS MINING. BOTTOM ROW: MEMBERS POSE FOR A GROUP PORTRAIT. ANNE ROWLEY & MEETING CO-CHAIR MEMPHIS HOLLAND EXCHANGE IDEAS.

Educational Events

To provide members with opportunities to interact with eminent leaders in person, we hosted Speaker Series events in hub cities throughout the year. In May, members in the Bay Area enjoyed a luncheon with Bridgett Luther, director of the California Department of Conservation, and Maureen Gorsen of Alston & Bird, LLP, who shared California's innovative state-level policies around green chemicals and environmental health. In June, New York City members joined the Sierra Club Director of Conservation Sarah Hodgdon to learn about her movement-building campaigns around energy issues. In July, members in the Washington, D.C. area enjoyed an intimate dinner with Jamie Rappaport Clark, then-executive vice president at Defenders of Wildlife, who spoke movingly about her firsthand experience bearing witness to the devastating effects of the Gulf oil spill on the region's wildlife.

Teleconference Calls

As in previous years, we secured a roster of prominent leaders in philanthropy, research, academia, and advocacy to further educate members about current issues via monthly teleconferences. Topics ranged from greening school lunches to e-waste to philanthropic policy. The tragic oil spill in the Gulf of Mexico also assumed educational focus as speakers shared perspectives from marine ecology, energy policy reform, and regional wildlife restoration. Because busy members were often unable to participate in teleconferences in real time, the Network placed summaries on the Online Community for reference. Through these educational opportunities, members en-



gaged in spirited conversations on groundbreaking advocacy and funding strategies and built relationships with fellow leaders in the environmental and philanthropic communities.

LEFT: SPEAKER ERIN GORMAN IS INTRODUCED TO ANNA LAWSON & ANN LOEB. RIGHT: BARBARA GILMORE, CAROLYN WEINBERGER & LIAISON LESLIE CAROTHERS DISCUSS ENVIRONMENTAL LAW.

Rachel's Network is grateful to the speakers who shared their expertise with us in 2010.

Thanks!

Bineshi Albert, *SouthWest Organizing Project* ♦ Margie Alt, *Environment America* ♦ Frances Beinecke, *Natural Resources Defense Council*
 Suzanne Biegel, *Investors' Circle* ♦ Robin Brulé, *Center for Philanthropic Partnerships* ♦ Gillian Caldwell, *1Sky* ♦ Leslie Carothers, *Environmental Law Institute*
 Jamie Rappaport Clark, *Defenders of Wildlife* ♦ Sandy Cunningham, *EcoNewMexico* ♦ Ron Curry, *NM Secretary of the Environment*
 Richard Denison, *Environmental Defense Fund* ♦ Gay Dillingham, *Earthstone International* ♦ Ben Dunham, *Office of Sen. Frank Lautenberg (NJ)*
 Natalie Fitz-Gerald, *Casa Nova Gallery* ♦ Maggie Fox, *Alliance for Climate Protection* ♦ Erin Gorman, *Divine Chocolate*
 Rivka Gordon, *Assn. of Reproductive Health Professionals* ♦ Maureen Gorsen, *Alston & Bird, LLP* ♦ Joe Guth, *Science & Environmental Health Network*
 Sebia Hawkins, *NM Environmental Law Center* ♦ Jennifer Hobson, *NM Tourism Department* ♦ Sarah Hodgdon, *Sierra Club*
 Andy Igrejas, *Safer Chemicals, Healthy Families Coalition* ♦ Jerusha Klemperer, *Slow Food, USA* ♦ Barbara Kyle, *Electronics Takeback Coalition*
 Dana Lanza, *Confluence Philanthropy* ♦ Dr. Jennifer Lawless, *American University Women & Politics Institute* ♦ Ali Long, *Springcreek Foundation*
 Bridgett Luther, *California Department of Conservation* ♦ Tony Massaro, *League of Conservation Voters* ♦ Sarah Noss, *Santa Fe Farmers' Market Institute*
 Jerry Pardilla, *National Tribal Environmental Council* ♦ Chris Peterson & Nancy Rumbel, *BirdNote* ♦ Kristin Rowe-Finkbeiner, *MomsRising.org*
 Kathy Sanchez, *Tewa Women United* ♦ Shyla Sheppard, *NM Community Capital* ♦ Nina Simons, *Bioneers* ♦ Vikki Spruill, *Ocean Conservancy*
 Dr. Sandra Steingraber, *Author & Ecologist* ♦ Sandra Swirski, *Alliance for Charitable Reform* ♦ Dennis Takahashi-Kelso, *Ocean Conservancy*
 Jessy Tolkan, *Green for All* ♦ Alvin Warren, *NM Secretary of Indian Affairs* ♦ Dan Weiss, *Center for American Progress*
 Hal Williams, *Outcome-Based Grantmaking Consultant* ♦ Rebecca Wodder, *American Rivers*

Leadership Services

Our signature board placement program redresses the gender imbalance at the highest tiers of the environmental movement by elevating members to the boards of major nonprofit organizations. In 2010, we placed one member on the board of the Columbia Center for Children's Environmental Health, giving this program a total of 35 placements since its inception. By offering resources for effective service, such as our *Board Orientation Guidebook*, we further developed their leadership capacity.

A workshop during the Annual Meeting, led by Liaisons Jamie Rappaport Clark of Defenders of Wildlife and Rebecca Wodder of American Rivers, helped members hear leadership perspectives on outstanding board service, working through common governance issues in small groups. The Network also continued to offer signature services such as résumé

development and business cards, preparing members to bring professional-caliber polish to their volunteerism and serve their causes with distinction.

Fiscal Sponsorship Fund

The Network's Fiscal Sponsorship Fund allows members to develop new projects through our established nonprofit structure. In 2010, member Martha Davis of Colorado undertook the second year of her Community Conch initiative, a conservation biology project that studies Bahamian conch populations. Martha conducted groundbreaking field work on this threatened species and its ecosystem and continues to work under our fiscal umbrella. At the same time, Virginia-based board member Sarah duPont initiated the sponsorship process for the *Centre International d'Arts et Musique*, an arts and music school in Ouidah, Benin, which opened in October to local youth.

Network by the Numbers: LEADERSHIP SERVICES & EDUCATIONAL EVENTS

- 10 teleconferences; 4 Speaker Series events
- 1 board placement
- 35 total board placements by year-end
- 2 Fiscal Sponsorship Fund participants
- 27 lobbying visits

Connecting to Congress

The Connecting to Congress program was established in 2010 to facilitate members' cultivation of meaningful relationships with Members of Congress who represent their district or their values. Staff accompanied members interested in individual lobbying throughout the year. During the Annual Meeting, we held a half-day of individual lobbying around toxic chemicals policy reform. Members who participated were equipped with training, support in scheduling meetings, materials on the issue, and assistance in executing follow-up. Through this personal service, we helped deepen members' political ties during a busy election year and leverage their influence as funders.

TOP ROW: SARAH DUPONT HANDS SPEAKER JESSY TOLKAN A NETWORK BUSINESS CARD. JOCELYN SLADEN PRESENTS HER CONCLUSION AT THE BOARD SERVICE WORKSHOP. MARCIA ANGLE & SPEAKER RIVKA GORDON PREPARE TO LOBBY THROUGH THE CONNECTING TO CONGRESS PROGRAM. BOTTOM ROW: RENÉE INGOLD & CAROLINE GABEL SHARE LEADERSHIP STRATEGIES WITH LIAISON MAGGIE FOX. MARTHA DAVIS INTRODUCES A SPEAKER AT THE SANTA FE IMPACT INVESTING WORKSHOP.



Brokering Strategic Alliances for the Earth

For the past five years, the Network has participated in outreach programs that maximize our collective impact by brokering strategic partnerships for the environment. Funded by members and external foundations, these initiatives capitalize on our members' influence to strengthen emerging leaders working on pathbreaking initiatives.

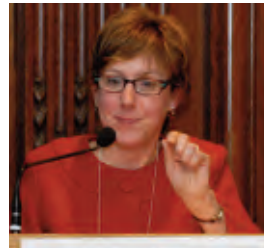


In 2010, the Body Burden collaboration with Environmental Working Group (EWG), which built an evidentiary record of the human health consequences of exposure to industrial chemicals, reached its conclusion. By diversifying the range of test subjects in earlier years, we had helped EWG attract a broader base of support for their campaign to regulate pollutants, while empowering women leaders as agents of change. In 2010, we joined the Safer Chemicals, Healthy Families Coalition to continue our work for toxics reform, keeping members abreast of individual lobbying opportunities as they arose.



Through the Strategic Connectors program, launched in 2005, we partnered with the National Association of Evangelicals (NAE) on the Creation Care Initiative, recognizing the potential of this vast constituency to promote conservation. In 2010, the Network continued to work with NAE Vice President of Governmental Relations Dr. Galen Carey and staff. With our support, NAE conducted a year-long study linking climate change to poverty in the developing world. The resulting report combined scientific and theological sources to call on evangelicals to fulfill their Biblical duty to care for the planet's neediest by caring for the planet. Thanks to our involvement, a message of stewardship has reached faith leaders at the grass-tops level, who can, in turn, engage millions in advocacy for a greener future.

Promoting Pro-Environment Women in Politics



reach out to women over 45 from underrepresented fields to run for office in 2012. As numerous studies have concluded, women have historically been reluctant to pursue public office, and because they do not enter the pipeline at the local level, they are woefully underrepresented at the state and national levels. Research also reveals that regardless of party, women tend to vote in favor of the environment far more often than their male counterparts.

Though the 2010 election resulted in a discouraging 17 percent of Congressional seats held by women, redistricting in the wake of the 2010 census also meant that open seats would yield fresh opportunities for new candidates to break through, so the Network eagerly signed on as a partner. Our role in the collaboration is to recruit women leaders from the environmental field to run, by reaching out to members and advisors who might know – or be – suitable candidates, and by publicizing the Project at gatherings and in published articles about it. After the candidates are identified, the Project then connects them with resources and training.

By the end of 2010, 12 Network members had generously stepped forward to fund this partnership. Staff immediately began researching potential presentation or publication opportunities and promoting this initia-

tive. We closed the year with optimism about this program's potential to correct the unsettling underrepresentation of women in elected office and promote new leaders who share our values.

Stepping into the Spotlight

To accelerate the Network's growth, cultivate members' comfort with promoting their achievements, and connect to new sources of learning, we began to raise the Network's visibility among advocacy organizations in 2010. By the year's end, we had built or revived relationships with program partners such as the League of Women Voters, Safer Chemicals, Healthy Families Coalition, and The 2012 Project, as well as the organizations helmed by our newest Liaisons.



Having remained behind the scenes throughout our first decade, we determined in 2010 that publicity could benefit members and accelerate our advancement. As such, we began exploring opportunities to promote our work in a variety of media outlets. In July, Rachel's Network was featured in *Town & Country* magazine's special issue on "the new face of philanthropy." This brief profile outlined our history and goals, leading to new inquiries from prospective members and partners. Members who answered our survey enthusiastically supported raising our public profile, and we concluded the year with hopes for increased public recognition in the future.

CLOCKWISE FROM TOP LEFT: THE SAFER CHEMICALS, HEALTHY FAMILIES COALITION WORKS FOR TOXICS POLICY REFORM. THE 2012 PROJECT ENCOURAGES WOMEN TO SEEK OFFICE. NETWORK ADVISOR AND PROJECT FOUNDER DEBBIE WALSH URGES MEMBERS TO CONSIDER A CANDIDACY. THE NETWORK IS FEATURED IN *TOWN & COUNTRY*. NAE PRODUCED A REPORT LINKING CLIMATE CHANGE TO GLOBAL POVERTY.

Financial Overview

Rachel's Network entered 2010 with a firm financial foundation built over ten years of conservative spending, cautious investment, and diligent pursuit of new funding. As in years past, our members rallied to support 2010 programs as well as general operations. Smaller revenue streams, including meeting fees and investment income, supplemented major gifts and membership dues, which remained the bedrock of our security, even as philanthropic resources throughout the country diminished as the economy fitfully rebounded. We drew minimally upon the strategic reserve intended to supplement funding during lean times to ensure that our members continued to benefit from the personalized outreach that distinguishes our Network. With revenues of \$ 676,728 and expenditures of \$670,173, staff exercised prudent fiscal discipline, enabling the organization to begin 2011 in sound fiscal health.

Carson Council Membership

In 2010, the Network successfully recruited 11 new members, representing \$55,000 in dues. A commit-

ted core of renewing members yielded an additional \$275,052. Altogether, Carson Council membership made up the largest revenue stream at 49 percent of the budget. As we approached the threshold of 90 members, we continued to look toward a future in which membership alone can sustain our general operations.

Program Support

We were pleased to have received 12 program support grants, with an average size of \$7,183. These grants were almost exclusively restricted to The 2012 Project Partnership. Program support represented 13 percent of our annual revenue.

General Operating Support

In 2010, 18 percent of the membership contributed a total of \$172,577 in unrestricted general support, with gifts ranging from \$100 to \$25,000. With an average contribution of \$8,629, member general support comprised 28 percent of annual revenues.

Within this total, \$167,103 was provided by the

board of directors. As the board continued to expand its role in institutional advancement, directors pledged to fund the Network as a top priority.

Facing 2011 with Confidence

In 2010, Rachel's Network tenaciously pursued program funding and sought general operating support from within our membership. In each arena of activity, we saw impressive member participation in sustaining our excellence, and we thank these stakeholders for their continued investment in our success. As a community of funders, it is a sure sign of our maturity that members and friends regularly include us in their annual grantmaking. This steadfast support has equipped us to approach 2011 with every expectation that the Network will continue to thrive in the next year and beyond.



FROM FAR LEFT: WINSOME MCINTOSH ADMIRES MARTY TALBOT'S PHOTO OF A SITE VISIT. MOLLY ROSS & LAURIE KRACUM APPRECIATE A POINT ABOUT WOMEN'S LEADERSHIP IN SANTA FE. SARAH DUPONT & OLGA FAISON SHARE STRATEGIES FOR BALANCING ADVOCACY AND PHILANTHROPY. MARA HENDRIX, IRENE CROWE, MOLLY ROSS & KATHY BORGEN LOOK TOWARD THE PUYE CLIFFS.

NOTE: This report reflects grants to Rachel's Network from January 1 to December 31, 2010. Every effort has been made to ensure accuracy; should an error have occurred, please contact Miriam Feffer with corrections.

2010 Major Donors

Rachel's Network thanks the generous supporters who contributed grants of at least \$5,000 outside membership.

Marcia Angle

Kathy Borgen & Brooke Borgen,
Borgen Family Foundation

Irene Crowe,
Pettus-Crowe Foundation

Sally Davidson

Sarah duPont

Caroline Gabel,
The Shared Earth Foundation

Marianne Gabel

Charlotte Hanes

Ann Hunter-Welborn

Fa Liddell

Winsome McIntosh,
The McIntosh Foundation

Adelaide Park Gomer,
Park Foundation, Inc.

Lisa Renstrom

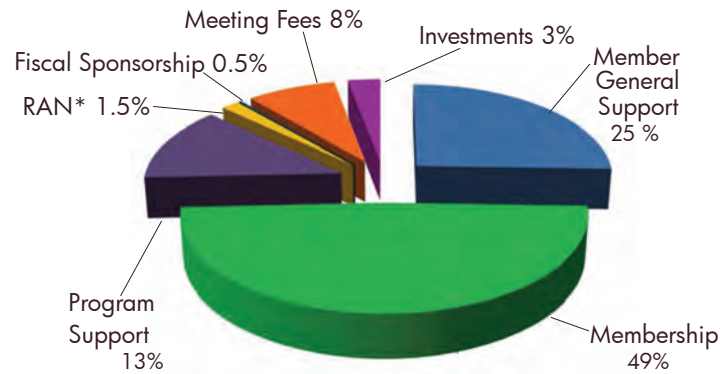
Molly Ross

Jocelyn Sladen,
Marjorie Sale Arundel Fund
for the Earth

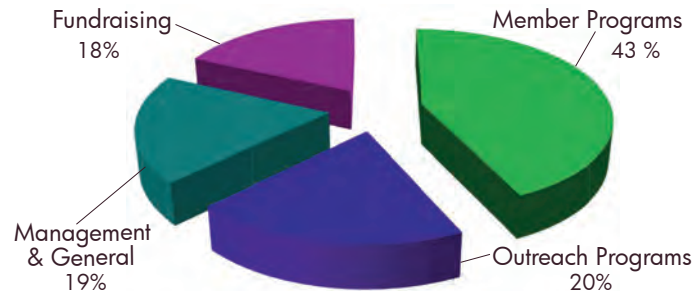
Susan Wallace

*RACHEL'S NETWORK & RAN HAVE SEVERAL OVERLAPPING BOARD MEMBERS BUT MAINTAIN SEPARATE MEMBERSHIPS. RACHEL'S NETWORK DOES NOT EXERCISE CONTROL OVER RAN'S PROGRAMS OR ASSETS.

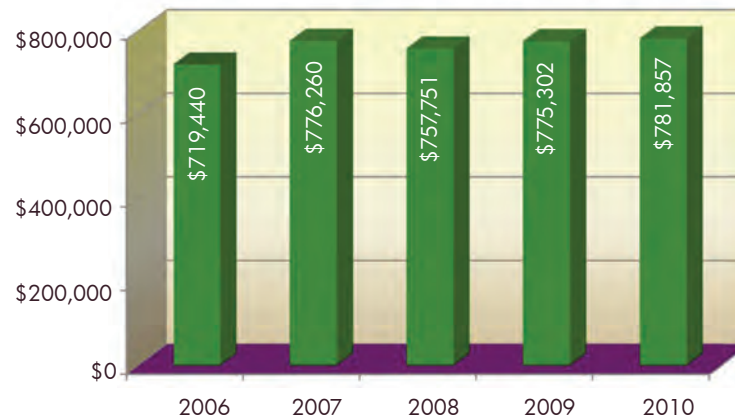
2010 Revenues



2010 Expenditures



Growth in Assets



2010 Financial Statement

Revenues

FOUNDATIONS	\$ -
GENERAL SUPPORT	\$ 172,576.56
RENEWALS	\$ 275,052.18
NEW MEMBERS	\$ 55,000.00
PROGRAM SUPPORT	\$ 86,200.00
FISCAL SPONSORSHIP	\$ 1,400.00
MEETING FEES	\$ 55,745.00
INVESTMENT INCOME	\$ 19,896.95
RAN REIMBURSEMENT*	\$ 10,857.08

TOTAL REVENUES **\$ 676,727.77**

Expenditures

LEADERSHIP	\$ 28,897.65
COMM./NETWORKING.	\$ 79,614.96
EDUCATIONAL EVENTS	\$ 31,205.73
ANNUAL MEETING	\$ 78,799.18
FALL RETREAT	\$ 55,037.12
FISCAL SPONSORSHIP FUNDS	\$ 15,420.27
MEMBER PROGRAM SUBTOTAL	\$ 288,974.91

CWNI	\$ 45,131.27
PUBLIC RELATIONS	\$ 60,516.44
STRATEGIC CONNECTORS	\$ 25,246.12
OUTREACH PROGRAM SUBTOTAL	\$ 130,893.83

TOTAL PROGRAM EXPENSES	\$ 419,868.74
PUBLIC RELATIONS	\$ 60,516.44
MANAGEMENT	\$ 128,712.68
FUNDRAISING	\$ 121,591.49

TOTAL EXPENDITURES **\$ 670,172.91**

Assets

CHANGE IN NET ASSETS	\$ 6,554.86
NET ASSETS FROM 2009	\$ 775,302.32
2010 NET ASSETS	\$ 781,857.18

A photograph of three women standing outdoors in front of the United States Capitol building. The woman on the left is wearing a white quilted vest over a black top and a yellow scarf. The woman in the center is wearing a black blazer and a patterned scarf, holding a green folder and a name tag that says "Carla". The woman on the right is seen from the back, wearing a black top. The background shows the large white dome of the Capitol building under a clear blue sky, with bare trees in the distance.

*impassioned leaders & agents of change
dedicated to the stewardship of the earth*

Rachel's Network

1200 18th Street NW, Suite 310

Washington, DC 20036

tel. 202.659.0846

www.RachelsNetwork.org