

OPENING DOORS



Rachel's
Network

2013 ANNUAL REPORT

MESSAGE FROM OUR LEADERSHIP

There's no doubt about it: our members have achieved a lot as individuals. It takes a determined and passionate person to run a foundation or start a nonprofit. But when these women join Rachel's Network to connect with like-minded peers, they find that their work can go further in helping advance a sustainable world.

As the only organization that sits at the intersection of the environment, women's leadership, and philanthropy, Rachel's Network opens doors. Not only do we amplify members' voices and strengthen their skills and knowledge, the Network facilitates collaboration that makes a difference for people and the planet.

We open doors for women like Linda Campbell by introducing them to political leaders and cultivating a supportive community of colleagues. Our members advocate for environmental legislation, visit their members of Congress and sometimes even run for office.

We strengthen skills and knowledge by connecting with like-minded organizations that promote women's leadership and environmental advocacy. Through our new Fellowship with Ashoka, we are building a pipeline of women environmental entrepreneurs and giving them the boost they need to implement their innovative ideas.

We amplify our members' voices by giving them a platform in media outlets and facilitating projects like the Earth Focus investigative report *UNSAFE: The Truth Behind Everyday Chemicals*. Read on to discover the many other ways we supported a sustainable future, women's leadership, and philanthropy in 2013.

Whether it's a connection that puts a member on the board of an important environmental organization they admire, or room to grow a nonprofit that gets funders talking about sustainable investing, we are committed to opening doors for our members and helping them access the leadership positions that fulfill their values and potential.



Thu Pham
President

A handwritten signature in black ink that reads "Thu".



Kathy Borgen
Board Chair

A handwritten signature in black ink that reads "Kathy".



Rachel's Network members are committed to environmental causes; interested in the world around them; aware of the power and influence of women; and active in making the world a better place.

ABIGAIL ROME, MARYLAND





“

Rachel's Network introduced me to high level women that I would not have met elsewhere, introduced me to projects, gave me the administrative support to branch out, and provided a supportive community for my efforts.

MARTHA DAVIS, COLORADO

BY THE NUMBERS

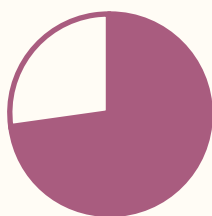
Collectively, members steward over **\$2 billion in assets**, and award close to **\$175 million in grants**. Nearly 100% of members supported an environmental cause in 2013, allocating an average of **63% of their charitable contributions** to these efforts.

Members serve in **100+ director positions** on the boards of influential organizations; with approximately **20% of the membership** accepting a new board or advisory council position in 2013.

MEMBERS' TOP TEN ENVIRONMENTAL PRIORITIES

1. Climate Change
 2. Biodiversity & Protecting Habitat
 3. Sustainable Development
 4. Environmental Education
 5. Environmental Health
 6. Marine Conservation
 7. Food & Agriculture
 8. Freshwater Conservation
 9. Renewable Energy
 10. Population
-

MEMBERS' LEADERSHIP



73%

supported candidates for local, state and national office



44%

met with their elected officials



38%

voiced their perspectives in the media or as a conference speaker



24%

launched a new program



“

It is difficult to express just how much Rachel's Network members and staff helped me and the co-directors during the production and launch of *Arise*.

MOLLY ROSS, COLORADO

INSPIRING ACTION THROUGH FILM

When it comes to communicating issues as important as wildlife poaching and climate change, simply conveying the facts won't do. Psychologists and marketing experts say that the way to inspire action is to lead with the heart, not the head. One of the most immediate ways to tell a heart story is through film.

Communicating environmental issues through film is a passion shared by several members, whether it's member Sarah duPont's harrowing 2012 documentary about the damaging impacts of gold mining in Peru, *Amazon Gold*; or Caroline Gabel and Dane Nichols' work with the Environmental Film Festival in the Nation's Capital (DCEFF).

"Rachel's Network's superb governance practices and policies are a guide to me, as Chair of DCEFF, as the Festival continues to evolve and grow," says Caroline. In its 22nd year, the festival is one of the largest of its kind in the world.

Ahead of the 2013 Annual Meeting, Rachel's Network screened Member Molly Ross' inspiring film *Arise* about women responding to environmental challenges. The film was years in the making and Rachel's Network members were there from the beginning.

"The first twenty minute clip was shown to the membership during member dialogue in 2007. Following that presentation, numerous members and staff networked us to women to interview, and also to funders," says Molly. "They have been sounding boards, cheerleaders and dear friends, and I will be forever grateful."

Over the years, Rachel's Network and individual members have supported eight Earth Focus programs on everything from fracking to Asian elephants, reaching hundreds of thousands of viewers with compelling stories about the planet's biggest challenges.



“

The impact of poorly regulated chemicals on our health is one of the major under-reported health issues of our time. And thanks to Rachel's Network we are able to get the word out to many new audiences throughout the nation.

RAISA SCRIBINE, MARYLAND

ADVANCING ENVIRONMENTAL HEALTH

In 1976, the Toxic Substances Control Act (TSCA) was passed with the intention of keeping Americans safe from dangerous chemicals. Not only did the law lack teeth from the start, it hasn't kept pace with the tens of thousands of new chemicals that have since flooded the market. The result? Americans have become guinea pigs for the chemical industry and science is revealing a host of health impacts from asthma to cancer.

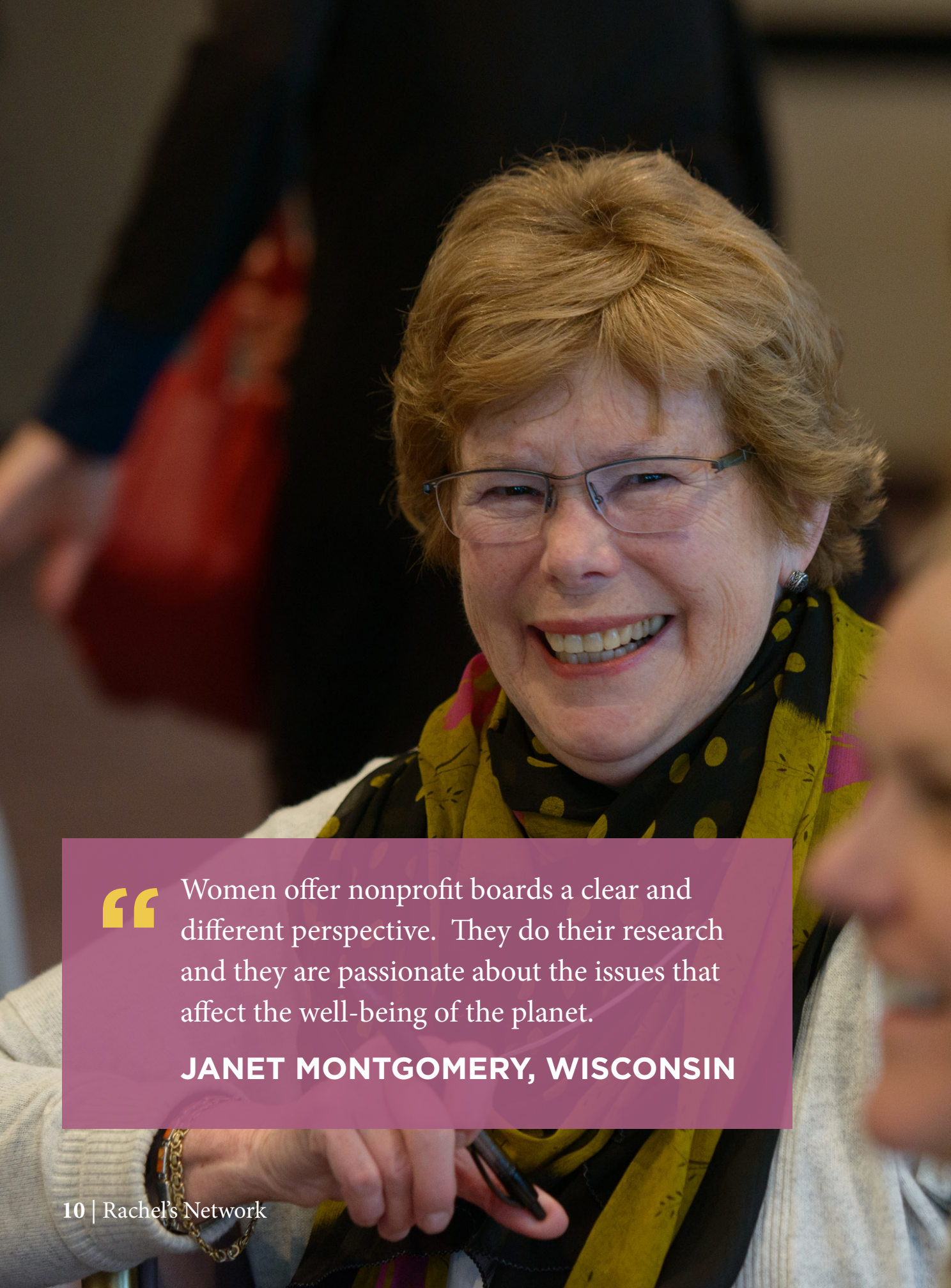
How can we build support for issues like environmental health without widespread knowledge of the problem? Enter Rachel's Network.

Working with television network KCET and Link TV's environmental news program, Earth Focus, Rachel's Network released an investigative report called *UNSAFE: The Truth Behind Everyday Chemicals*. The short documentary advances the conversation about chemical reform, a concern raised by our namesake Rachel Carson more than 50 years ago. Member and Earth Focus Executive Producer Raisa Scriabine led the production

with input and support from fellow members Marcia Angle, Kathy Borgen, Carolyn Fine Friedman, Cari Rudd, Marty Talbot, and Jessica Welborn.

Carol Kwiatkowski, Executive Director of The Endocrine Disruption Exchange — a leading voice on this issue and one of the organizations featured in the report — said: "This documentary is moving the issue of endocrine disruption forward by leaps and bounds in terms of access by the general public."

Increased public pressure — furthered by programs like *UNSAFE* — has spurred companies like Johnson & Johnson to remove the worst offenders from shelves. And legislatures from Vermont and Maine to Oregon and California are now pushing for better chemical safety regulations at the state level.



“

Women offer nonprofit boards a clear and different perspective. They do their research and they are passionate about the issues that affect the well-being of the planet.

JANET MONTGOMERY, WISCONSIN

BUILDING WOMEN'S LEADERSHIP

When Janet Montgomery heard Wendy Philleo, Executive Director of the Center for a New American Dream, speak at the 2013 Annual Meeting, she knew she wanted to be a part of the organization. She was inspired by the nonprofit's work to reduce American's consumption and improve quality of life.

As it turns out, Wendy had already expressed interest in working with the Network to expand the New Dream board through our **Board Placement Program***. Thanks to these connections, Janet was elected to the New Dream board in 2013.

Board service is one of many ways that Rachel's Network members are bringing positive change to their communities and the world. Every member serves on a board (and often more than one) or has past governance experience. And women's participation on boards is critical when the gender gap persists at the executive level of most major nonprofits.

"Diversity is critical to a board functioning at peak performance," says Rachel's Network Environmental Leadership Liaison Jamie Rappaport Clark, President and CEO of Defenders of Wildlife. "To influence our society about the need to conserve imperiled species and important habitats, we need to be able to communicate better with varied constituencies and grow our support base."



Board Placement Program

The Rachel's Network Board Placement Program matches environmental and social justice nonprofits with our talented membership and thus, helps members make valuable contributions to important causes. To date, more than 40 members have been placed on the boards of influential organizations. In 2013, these placements included Anna Logan Lawson who was elected to the Population Connection board and Cari Rudd who joined the Ethic Mark Awards Judges Panel.



“

The status quo is the riskiest future we can imagine.

LISA RENSTROM, WASHINGTON, DC

INVESTING IN CLEAN ENERGY

Because fossil fuel companies don't pay for the many external costs associated with their use, renewable energy remains at a disadvantage in the marketplace. A largely student-led movement to encourage their universities to divest from fossil fuels has sparked intense scrutiny of the financial holdings of other large institutions, including foundations.

Several Network members are playing an active role in this effort too, through progressive philanthropy.

In 2013, Member Lisa Renstrom, with support from the Wallace Global Fund, launched Divest-Invest: Philanthropy through the Rachel's Network **Fiscal Sponsorship Fund***. This coalition of U.S. and global foundations has pledged to divest from fossil fuel companies and invest a portion of their assets in the clean energy economy. By year's end, 19 foundations with over \$2 billion in assets had signed the pledge.

Member Adelaide Park Gomer, President of the Park Foundation, spent years educating, encouraging, and at times goading her board

to divest. In 2013, her efforts paid off: the Park Foundation completed its divestment from fossil fuels, holding only enough stocks in gas and oil to be able to vote their proxies.

Because of the trailblazing efforts of people like Lisa and Adelaide, other members — and the broader philanthropic community — are exploring divestment individually, with their own foundations, and the boards on which they serve. In addition, many of our members practice shareholder advocacy, using their unique influence to transform the nation's energy mix.



The Fiscal Sponsorship Fund

enables members to initiate projects through the Network's nonprofit structure to test market their ideas before creating a new entity. These programs — Sarah duPont's arts education nonprofit CIAMO and Martha Davis' Caribbean conservation program Community Conch — are a powerful testament to our members' commitment to communities and the planet.



“

Rachel's Network helped me realize the power of knowing your elected officials.

LINDA CAMPBELL, COLORADO

ADVOCATING FOR SMART POLICIES

Sometimes, our strengths flourish best when we hit a wall. That's what happened to Member Linda Campbell when her homeowners association told her she couldn't plug her electric vehicle into her driveway. Rather than throw up her hands, Linda decided to throw her support behind legislation in her home state of Colorado that would remove obstacles to installing residential electric car charging stations.

In 2013, Linda worked with her representatives to advance the bill, including testifying on its behalf; Governor Hickenlooper signed SB13-126 into law in 2013, making it easier for Colorado residents to embrace electric vehicles. Linda not only made it possible for her household to use an electric car, she helped the entire state advance!

At one time, Linda wasn't interested in political advocacy, but her involvement with Rachel's Network changed her mind. She even considered a run for public office. "I received such a tremendous amount of encouragement and guidance from my fellow funders and friends," she says.

The transformative experience of realizing your power happens to a lot of our members. During our 2013 Annual Meeting in Washington, D.C., members met with nearly 30 offices on Capitol Hill in support of strengthening Clean Air Act rules and fighting the Keystone XL Pipeline.

"The highlight of the day was that we got to speak to Senator Kay Hagan in person, in the elaborate chamber right outside where they were voting on the budget," says Member Marcia Angle of her trip to Congress.

By far, the most common word Rachel's Network members use to describe themselves is "advocate." That's because they're not waiting for anyone else to solve our planet's problems — they're diving in and taking action themselves.



“

This Fellowship is a win-win-win opportunity for Rachel's Network members to support environmental solutions, promote women leaders, and practice transformative philanthropy, together.

THU PHAM, NETWORK PRESIDENT

SUPPORTING WOMEN ENTREPRENEURS

Women are poised to offer solutions to our biggest environmental challenges, but they aren't always getting the support they need to take their concepts to the next level.

A gender disparity in U.S. fellowship programs is keeping women innovators from seeing their ideas realized. In some domestic fellowship classes, women comprise only 17 percent of elected candidates. That's why Rachel's Network and Ashoka — the world's largest network of social entrepreneurs — teamed up in 2013 to support women pioneering sustainable solutions.

The Rachel's Network Fellowship identifies women entrepreneurs who are addressing our most serious environmental challenges and will provide a chosen candidate with a three-year stipend to advance her work.

Through Ashoka's proven candidate review process, we're looking for women who have a new, knock-out idea that's systems-changing; who are practical visionaries with the creativity

and skill to address the problem at a national level; who are working full-time to develop their idea, and are committed to realizing big impact.

Our outreach has already helped increase Ashoka's pipeline of women leaders and environmental entrepreneurs: nearly doubling their average number of nominations from the environmental sector, half of whom are women! Nominees' efforts include: improving agricultural practices and supporting farmers, enabling healthy connections between kids and food, creating green jobs through electronics recycling, and building the legal foundation for a resilient, sharing economy. The Fellow selection process is ongoing, and a candidate will be elected in 2014.

Strategic partnerships with like-minded organizations, such as Ashoka, leverage the Network's collective resources, knowledge, and outreach, making it possible for us to amplify our impact, tackle environmental challenges, and promote women more effectively.

GROWING KNOWLEDGE

From preserving biodiversity, to ensuring the safety of our food supply, the well-being of animals is deeply tied to human health. Yet the policies that govern the welfare of domestic and wild species are in desperate need of reform.

Member Victoria Stack wanted to address this problem, so she worked with her fellow Rachel's Network members in the Animals and Society **Learning Circle*** to convene advocacy leaders and exchange insights on how to better advance animal welfare.

"The broader cultural change that we seek will only come from dialogue between the animal welfare and environmental communities," said panelist Paul A. Locke, Director of the DrPH Program in Environmental Health Sciences at Johns Hopkins.

Guests and invited speakers appreciated the opportunity to discuss the issue with cohorts. Now, Victoria and other Circle members are drafting policy recommendations.

In 2013, the Impact Investing Circle worked with As You Sow — a nonprofit fostering corporate responsibility and sustainability — to establish a proxy voting guide for members to file shareholder resolutions with energy, food, and chemical companies.

And the Sustainable Agriculture Circle seeded a collaboration with American Farmland Trust, providing funding and feedback for a survey of women agricultural landowners in the U.S. This survey is critical to understanding women landowners and the barriers they face, thus enabling AFT to customize resources and technical assistance on a nationwide scale.



Learning Circles

are self-directed groups that allow Rachel's Network members to share perspectives, mentor one another, and learn from experts within and outside the Network. These dialogues have evolved into Annual Meeting and Fall Retreat themes, national initiatives, and partnerships with environmental organizations. The Network facilitates five Circles around the issues of population, animals, water, agriculture, and investing.



“

I've been inspired by fellow members in our Impact Investing Learning Circle, who are using program-related investments, ballot initiatives, and other mechanisms to foster the transition to clean energy.

LOREN BLACKFORD, NEW YORK



CONVENING GROUP DIALOGUES

Nothing inspires action like putting today's leading environmental **thinkers and advocates*** in the same room. If you follow a successful project back to its source, you'll often find it began with thoughtful people sharing a meal or exploring a new destination together. Many of the efforts launched or supported by Network members in 2013 — from Earth Focus documentaries including *UNSAFE* to individual shareholder resolutions — were seeded at one of our gatherings.

That's why Rachel's Network convenes an Annual Meeting and Fall Retreat every year. In March, we brought together proponents for low-impact living at our Annual Meeting in Washington D.C. Over 40 members and guests joined us to hear about successful systems-changing campaigns like Meatless Monday and the sharing economy.

Our Fall Retreat in Austin, Texas on sustainable agriculture gave members a chance to learn from the field's influential champions. We expanded our knowledge of sustainable meat production, habitat restoration, and native

plant advocacy. To share what we learned with the wider environmental and philanthropic community, we compiled "11 Ideas to Support Sustainable Agriculture" from the experts participating in the Retreat, which was published on the Food & Water Watch blog.



Thinkers and Advocates

In 2013, Rachel's Network members had the privilege of exchanging perspectives with many notable leaders, including:

- Rep. Donna Edwards of Maryland
- Denis Hayes, Bullitt Foundation
- Anna Lappé, Small Planet Institute
- Bob Martin, Johns Hopkins Center for a Livable Future
- Kate McGinty, Former Chair of the White House Council on Environmental Quality
- Danielle Nierenberg, FoodTank
- Tom Philpott, Mother Jones
- Annie Leonard, The Story of Stuff Project
- Peggy Neu, The Monday Campaigns
- Tensie Whelan, Rainforest Alliance

“

It's a privilege to be among women who are so courageous. I feel buoyed by their presence.

MARY BOOKWALTER, INDIANA



FINANCIALS

2013 REVENUES

General Support	\$203,215.12
Membership	\$340,127.44
Program Funds	\$201,584.95
Fiscal Sponsorship Fund	\$18,900.00
Meeting Fees	\$55,850.00
Investment Income	\$26,607.53
RAN Reimbursement	\$10,191.12
Total Revenues	\$856,476.16

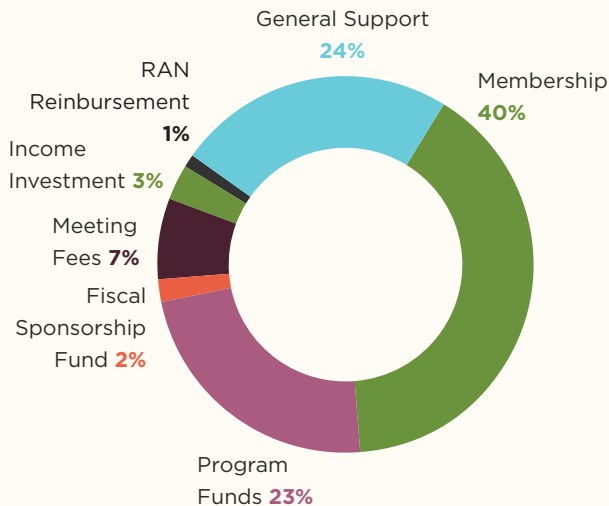
2013 EXPENSES

Outreach Programs	\$221,992.83
Member Programs	\$318,821.46
Management & General	\$90,335.39
Development	\$125,471.70
Public Relations	\$43,547.70
Total Expenses	\$800,169.08

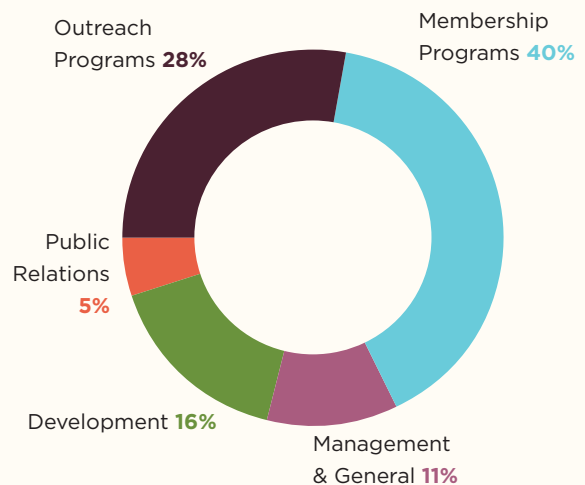
ASSETS

Net Assets from 2012	\$734,971.96
Change in Net Assets	\$56,307.08
2013 Net Assets	\$791,279.04

PERCENT OF REVENUE



PERCENT OF EXPENSES



2013 MAJOR DONORS

Rachel's Network thanks the following supporters who contributed grants greater than \$5,000 in 2013.

Marcia Angle	Caroline Gabel*, The Shared Earth Foundation	Adelaide Park Gomer, Park Foundation, Inc.
Kathy Borgen*, Borgen Family Foundation	Marianne Gabel*	Lisa Renstrom
Linda Campbell*	Charlotte Hanes*	Molly Ross*, Swift Wings Foundation
Irene Crowe*, Pettus Crowe Foundation	Ann Hunter-Welborn*	Jocelyn Sladen*, Marjorie Sale Arundel Fund
Sally Davidson*	Florence Liddell*	Susan Wallace*, Woodtiger Fund
Sarah duPont*	Annarie Lyles, Marisla Foundation	Wallace Global Fund
Carolyn Fine Friedman	Winsome McIntosh*, The McIntosh Foundation	Jessica Welborn
Susan Fulton*		

*Denotes 2013 Board of Directors

LEADERSHIP

Environmental

Leadership Liaisons

Margie Alt

Executive Director,
Environment America

Nan Aron

Founder & President,
Alliance for Justice

Frances Beinecke

President, Natural
Resources Defense
Council

Jamie R. Clark

President & CEO,
Defenders of Wildlife

Suzanne Ehlers

President & CEO,
Population Action
International

Katie Frohardt

Executive Director, Fauna
& Flora International - US

Kathryn L. Kennedy, Ph.D.

President & Executive
Director, Center for Plant
Conservation

Mary L. Klein

President & CEO,
NatureServe

Stephanie K. Meeks

President & CEO,
National Trust for Historic
Preservation

Tensie Whelan

President, Rainforest
Alliance

Circle of Advisors

Rev. Sally Bingham

President & Founder,
Interfaith Power & Light

Dr. Helen Caldicott

Founder, Physicians for
Social Responsibility

Theo Colborn, Ph.D.

Founder, TEDX (The
Endocrine Disruption
Exchange)

Paula DiPerna

Special Advisor, Carbon
Disclosure Project -
North America

Dr. Sylvia A. Earle

Oceanographer &
Explorer-in-Residence;
National Geographic
Society

Kathryn S. Fuller

Chair, National Museum
of Natural History,
Smithsonian Institution

Dr. Jane Goodall, DBE

Founder, Jane Goodall
Institute and Gombe
Stream Research Center

Hazel Henderson

Founder, Ethical Markets
Media, LLC

Hunter Lovins

Founder & President,
Natural Capitalism
Solutions

Carolyn Merchant

Professor, UC - Berkeley

Nora Pouillon

Author; Chef, & Owner,
Restaurant Nora

Carolyn Raffensperger

Executive Director,
Science and
Environmental Health
Network

Vikki Spruill

President & CEO, Council
on Foundations

Debbie Walsh

Director, Center for
American Women and
Politics

Alice Waters

Author; Chef & Owner,
Chez Panisse Restaurant

Terry Tempest Williams

Author, Naturalist, and
Conservationist

Photo credits:

Cover: iStockphoto

Pages 4-10 and 14-21: Djenno Bacvic

Page 12: dfbphotos/Flickr



Rachel's
Network

1200 18th Street NW, Suite 910

Washington, DC 20036

www.rachelsnetwork.org

@RachelsNetwork